

# PCE

Connection  
to the future



Product Overview

2018/19  
MADE IN AUSTRIA

# CEE-Plugs

110V~	230V~	400V~
50/60Hz 4h	50/60Hz 3p=6h 4p+5p=9h	50/60Hz 3p=9h 4p+5p=6h

## Shark Plug

- with screw terminals
- with Shark cable gland

IP44



Ampere	Poles	Cat.No.	Cat.No.	Cat.No.
16	3	013-4	013-6	013-9
16	4	014-4	014-9	014-6
16	5	015-4	015-9	015-6
32	3	023-4	023-6	023-9
32	4	024-4	024-9	024-6
32	5	025-4	025-9	025-6

## Turbo Shark Plug

- screwless connection technology
- with Shark cable gland

IP44



16	3	013-4TT	013-6TT	013-9TT
16	4	014-4TT	014-9TT	014-6TT
16	5	015-4TT	015-9TT	015-6TT
32	3	023-4TT	023-6TT	023-9TT
32	4	024-4TT	024-9TT	024-6TT
32	5	025-4TT	025-9TT	025-6TT

## Shark Plug

- with screw terminals
- with Shark cable gland

IP66/67



16	3	0132-4	0132-6	0132-9
16	4	0142-4	0142-9	0142-6
16	5	0152-4	0152-9	0152-6
32	3	0232-4	0232-6	0232-9
32	4	0242-4	0242-9	0242-6
32	5	0252-4	0252-9	0252-6

## Turbo Shark Plug

- screwless connection technology
- with Shark cable gland

IP66/67



16	3	0132-4TT	0132-6TT	0132-9TT
16	4	0142-4TT	0142-9TT	0142-6TT
16	5	0152-4TT	0152-9TT	0152-6TT
32	3	0232-4TT	0232-6TT	0232-9TT
32	4	0242-4TT	0242-9TT	0242-6TT
32	5	0252-4TT	0252-9TT	0252-6TT

## Power Twist Plug

- contact frame with screws
- nickel-plated contacts
- with Twist cable gland
- with pilot contact

IP66/67



63	3	033-4	033-6	033-9
63	4	034-4	034-9	034-6
63	5	035-4	035-9	035-6
125	3	043-4	043-6	043-9
125	4	044-4	044-9	044-6
125	5	045-4	045-9	045-6

## Twist Angled plug

- with screw terminals
- with Twist cable gland

IP44 (IP67 on request)



16	3	8013-4	8013-6	8013-9
16	4	8014-4	8014-9	8014-6
16	5	8015-4	8015-9	8015-6
32	3	8023-4	8023-6	8023-9
32	4	8024-4	8024-9	8024-6
32	5	8025-4	8025-9	8025-6

## Turbo Twist Angled plug

- screwless connection technology
- with Twist cable gland

IP44 (IP67 on request)



16	3	8013-4TT	8013-6TT	8013-9TT
16	4	8014-4TT	8014-9TT	8014-6TT
16	5	8015-4TT	8015-9TT	8015-6TT
32	3	8023-4TT	8023-6TT	8023-9TT
32	4	8024-4TT	8024-9TT	8024-6TT
32	5	8025-4TT	8025-9TT	8025-6TT

## Wall mounted plug

- with screw terminals
- top (M25) or rear entry

IP44 (IP67 on request)



16	3	513-4	513-6	513-9
16	4	514-4	514-9	514-6
16	5	515-4	515-9	515-6
32	3	523-4	523-6	523-9
32	4	524-4	524-9	524-6
32	5	525-4	525-9	525-6



Ampere	Poles	110V~	230V~	400V~
		Cat.No.	Cat.No.	Cat.No.
		50/60Hz 4h	50/60Hz 3p=6h 4p+5p=9h	50/60Hz 3p=9h 4p+5p=6h
16	3	9513-4	<b>9513-6</b>	9513-9
16	4	9514-4	9514-9	<b>9514-6</b>
16	5	9515-4	9515-9	<b>9515-6</b>
32	3	9523-4	<b>9523-6</b>	9523-9
32	4	9524-4	9524-9	<b>9524-6</b>
32	5	9525-4	9525-9	<b>9525-6</b>

### Wall mounted plug

- with screw terminals
- for wiring through
- top (M25), 2x bottom (M25) or rear entry

IP44



63	3	533-4	<b>533-6</b>	533-9
63	4	534-4	534-9	<b>534-6</b>
63	5	535-4	535-9	<b>535-6</b>

### Power Twist Wall mounted plug

- top (M40), bottom (2xM32) or rear entry
- nickel-plated contacts, with pilot contact
- waterproof cover and cable-glands are available

IP66/67

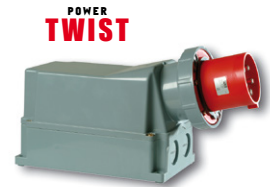


125	3	543-4	<b>543-6</b>	543-9
125	4	544-4	544-9	<b>544-6</b>
125	5	545-4	545-9	<b>545-6</b>

### Power Twist Wall mounted plug

- top (M63), bottom (2xØ40) or rear entry
- nickel-plated contacts, with pilot contact
- waterproof cover and cable-glands are available

IP66/67



### flange: 70x70; fixing center 56x56

16	3	613-4	<b>613-6</b>	613-9
16	4	614-4	614-9	<b>614-6</b>
16	5	615-4	615-9	<b>615-6</b>
32	3	623-4	<b>623-6</b>	623-9
32	4	624-4	624-9	<b>624-6</b>
32	5	625-4	625-9	<b>625-6</b>

### Flanged plug

- straight
- with screw terminals

IP44

other flange sizes, screwless terminals or IP67 on request



### flange: 100x100; fixing center 80x80

63	3	633-4	<b>633-6</b>	633-9
63	4	634-4	634-9	<b>634-6</b>
63	5	635-4	635-9	<b>635-6</b>

### Power Twist Flanged plug

- straight
- contact frame with screws
- nickel-plated contacts, with pilot contact
- waterproof cover and cable-glands are available

IP66/67 (IP44 on request)



### flange: 120x120; fixing center 100x100

125	3	643-4	<b>643-6</b>	643-9
125	4	644-4	644-9	<b>644-6</b>
125	5	645-4	645-9	<b>645-6</b>

### Twist Flanged plug angled

- with screw terminals

IP44 (IP67 on request)



### flange: 100x112; fixing center 80x88

63	3	733-4	<b>733-6</b>	733-9
63	4	734-4	734-9	<b>734-6</b>
63	5	735-4	735-9	<b>735-6</b>

### Power Twist Flanged plug

- sloping
- contact frame with screws
- nickel-plated contacts, with pilot contact
- waterproof cover and cable-glands are available

IP66/67



### flange: 120x130; fixing center 100x108

125	3	743-4	<b>743-6</b>	743-9
125	4	744-4	744-9	<b>744-6</b>
125	5	745-4	745-9	<b>745-6</b>

16	4		7014-9	7014-6	IP44
16	4		70142-9	70142-6	IP66/67
16	5			<b>7015-6</b>	IP44
16	5			70152-6	IP66/67
32	4		7024-9	7024-6	IP44
32	4		70242-9	70242-6	IP66/67
32	5			<b>7025-6</b>	IP44
32	5			70252-6	IP66/67

### Shark Phase inverter

- with screw terminals
- nickel-plated contacts

IP44, IP66/67



# CEE-Connectors and -Sockets

## Shark Connector

- with screw terminals
- with Shark cable gland

IP44



Ampere	Poles	110V~	230V~	400V~
		Cat.No.	Cat.No.	Cat.No.
16	3	213-4	213-6	213-9
16	4	214-4	214-9	214-6
16	5	215-4	215-9	215-6
32	3	223-4	223-6	223-9
32	4	224-4	224-9	224-6
32	5	225-4	225-9	225-6

## Turbo Shark Connector

- screwless connection technology
- with Shark cable gland

IP44



16	3	213-4TT	213-6TT	213-9TT
16	4	214-4TT	214-9TT	214-6TT
16	5	215-4TT	215-9TT	215-6TT
32	3	223-4TT	223-6TT	223-9TT
32	4	224-4TT	224-9TT	224-6TT
32	5	225-4TT	225-9TT	225-6TT

## Shark Connector

- with screw terminals
- with Shark cable gland

IP66/67



16	3	2132-4	2132-6	2132-9
16	4	2142-4	2142-9	2142-6
16	5	2152-4	2152-9	2152-6
32	3	2232-4	2232-6	2232-9
32	4	2242-4	2242-9	2242-6
32	5	2252-4	2252-9	2252-6

## Turbo Shark Connector

- screwless connection technology
- with Shark cable gland

IP66/67



16	3	2132-4TT	2132-6TT	2132-9TT
16	4	2142-4TT	2142-9TT	2142-6TT
16	5	2152-4TT	2152-9TT	2152-6TT
32	3	2232-4TT	2232-6TT	2232-9TT
32	4	2242-4TT	2242-9TT	2242-6TT
32	5	2252-4TT	2252-9TT	2252-6TT

## Power Twist Connector

- contact frame with screws
- with lamellar contact
- with Twist cable gland

IP66/67



63	3	233-4	233-6	233-9
63	4	234-4	234-9	234-6
63	5	235-4	235-9	235-6
125	3	243-4	243-6	243-9
125	4	244-4	244-9	244-6
125	5	245-4	245-9	245-6

## Wall socket

- with screw terminals
- top (M25) or rear entry

IP44



16	3	113-4	113-6	113-9
16	4	114-4	114-9	114-6
16	5	115-4	115-9	115-6
32	3	123-4	123-6	123-9
32	4	124-4	124-9	124-6
32	5	125-4	125-9	125-6

## Turbo Twist Wall socket

- screwless connection technology
- top (M25) or rear entry

IP44



16	3	113-4TT	113-6TT	113-9TT
16	4	114-4TT	114-9TT	114-6TT
16	5	115-4TT	115-9TT	115-6TT
32	3	123-4TT	123-6TT	123-9TT
32	4	124-4TT	124-9TT	124-6TT
32	5	125-4TT	125-9TT	125-6TT

## Wall socket

- with screw terminals
- top (M25) or rear entry

IP67



16	3	1132-4	1132-6	1132-9
16	4	1142-4	1142-9	1142-6
16	5	1152-4	1152-9	1152-6
32	3	1232-4	1232-6	1232-9
32	4	1242-4	1242-9	1242-6
32	5	1252-4	1252-9	1252-6



Ampere	Poles	110V~ 50/60Hz 4h	230V~ 50/60Hz 3p=6h 4p+5p=9h	400V~ 50/60Hz 3p=9h 4p+5p=6h
		Cat.No.	Cat.No.	Cat.No.

63	3	133-4	133-6	133-9
63	4	134-4	134-9	134-6
63	5	135-4	135-9	135-6

### Power Twist Wall socket

- top (M40), bottom (2xM32) or rear entry
- with lamellar contact
- to order with pilot contact please add a "5" e.g.: 1335-6

IP66/67

POWER  
TWIST



63	3	1337-4	1337-6	1337-9
63	4	1347-4	1347-9	1347-6
63	5	1357-4	1357-9	1357-6
125	3	143-4	143-6	143-9
125	4	144-4	144-9	144-6
125	5	145-4	145-9	145-6

### Power Twist Wall socket

- 63A: top (M40), bottom (2xØ40) or rear entry
- 125A: top (M63), bottom (2xØ40) or rear entry
- with lamellar contact
- to order with pilot contact please add a "5" e.g.: 13575-6

IP66/67

POWER  
TWIST



16	3		9213-6	
16	4		9214-9	9214-6
16	5			9215-6
32	3		9223-6	
32	4		9224-9	9224-6
32	5			9225-6

### Wall socket COMBO

- with integrated socket\*, connecting terminals up to 10mm<sup>2</sup>, ready wired
- for Combo-wall socket 32A the socket (DIN 49440) is protected by fuse (10A slow)

IP44



\* conforming to Austrian/German system, other versions on request!

### flange: 75x75; fixing center 60x60

16	3	313-4f7	313-6f7	313-9f7
16	4	314-4f7	314-9f7	314-6f7
16	5	315-4f7	315-9f7	315-6f7
32	3	323-4f7	323-6f7	323-9f7
32	4	324-4f7	324-9f7	324-6f7
32	5	325-4f7	325-9f7	325-6f7

### Flanged socket

- straight
- with screw terminals
- other versions on request

IP44

IP44/IP54 (16A 3p, 16A 5p, 32A 5p)



### flange: 75x75; fixing center 60x60

16	3	313-4TTf7	313-6TTf7	313-9TTf7
16	4	314-4TTf7	314-9TTf7	314-6TTf7
16	5	315-4TTf7	315-9TTf7	315-6TTf7
32	3	323-4TTf7	323-6TTf7	323-9TTf7
32	4	324-4TTf7	324-9TTf7	324-6TTf7
32	5	325-4TTf7	325-9TTf7	325-6TTf7

### Turbo Twist Flanged socket

- straight
- screwless connection technology
- other versions on request

IP44

IP44/IP54 (16A 3p, 16A 5p, 32A 5p)

TURBO  
TWIST  
click



### flange: 75x75; fixing center 60x60

16	3	3132-4	3132-6	3132-9
16	4	3142-4	3142-9	3142-6
16	5	3152-4	3152-9	3152-6
32	3	3232-4	3232-6	3232-9
32	4	3242-4	3242-9	3242-6
32	5	3252-4	3252-9	3252-6

### Flanged socket

- straight
- with screw terminals
- other versions on request

IP67



### flange: 75x75; fixing center 60x60

16	3	3132-4TT	3132-6TT	3132-9TT
16	4	3142-4TT	3142-9TT	3142-6TT
16	5	3152-4TT	3152-9TT	3152-6TT
32	3	3232-4TT	3232-6TT	3232-9TT
32	4	3242-4TT	3242-9TT	3242-6TT
32	5	3252-4TT	3252-9TT	3252-6TT

### Turbo Twist Flanged socket

- straight
- screwless connection technology
- other versions on request

IP67

TURBO  
TWIST  
click



### flange: 100x100; fixing center 80x80

63	3	333-4	333-6	333-9
63	4	334-4	334-9	334-6
63	5	335-4	335-9	335-6

### Power Twist Flanged socket

- straight
- with lamellar contact
- to order with pilot contact please add a "5" e.g.: 3355-6
- other versions on request

IP66/67

POWER  
TWIST



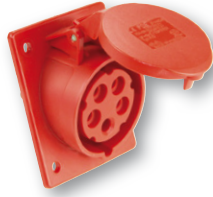
# CEE-Sockets

Ampere	Poles	110V~	230V~	400V~
		Cat.No.	Cat.No.	Cat.No.
		50/60Hz 4h	50/60Hz 3p=6h 4p+5p=9h	50/60Hz 3p=9h 4p+5p=6h

## Flanged socket

- sloping
- with screw terminals
- other versions on request

IP44  
IP44/IP54 (16A 3p, 16A 5p, 32A 5p)



flange: 80x97; fixing center 60x73

16	3	413-4f8	413-6f8	413-9f8
16	4	414-4f8	414-9f8	414-6f8
16	5	415-4	415-9	415-6
32	3	423-4	423-6	423-9
32	4	424-4	424-9	424-6
32	5	425-4	425-9	425-6

## Turbo Twist Flanged socket

- sloping
- screwless connection technology
- other versions on request

IP44  
IP44/IP54 (16A 3p, 16A 5p, 32A 5p)



flange: 80x97; fixing center 60x73

16	3	413-4TTf8	413-6TTf8	413-9TTf8
16	4	414-4TTf8	414-9TTf8	414-6TTf8
16	5	415-4TT	415-9TT	415-6TT
32	3	423-4TT	423-6TT	423-9TT
32	4	424-4TT	424-9TT	424-6TT
32	5	425-4TT	425-9TT	425-6TT

## Flanged socket

- sloping
- with screw terminals
- other versions on request

IP67



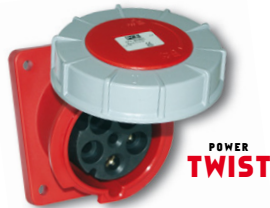
flange: 80x97; fixing center 60x73

16	3	4132-4f8	4132-6f8	4132-9f8
16	4	4142-4f8	4142-9f8	4142-6f8
16	5	4152-4f78	4152-9f78	4152-6f78
32	3	4232-4f78	4232-6f78	4232-9f78
32	4	4242-4f78	4242-9f78	4242-6f78
32	5	4252-4f78	4252-9f78	4252-6f78

## Power Twist Flanged socket

- sloping
- contact frame with screws
- other versions on request

IP66/67



flange: 100x112; fixing center 80x88

63	3	433-4	433-6	433-9
63	4	434-4	434-9	434-6
63	5	435-4	435-9	435-6

flange: 120x130; fixing center 100x108

125	3	443-4	443-6	443-9
125	4	444-4	444-9	444-6
125	5	445-4	445-9	445-6

# Motor protection plugs



CEE-Motor protection plug  
contactor up to 15kW



Motor protection  
plug 1,5-16A



CEE-plug with switch  
Designs:  
On-/Off-switch  
reversing switch  
phase inverter  
rotating field check  
operating display  
(available with/without holder)



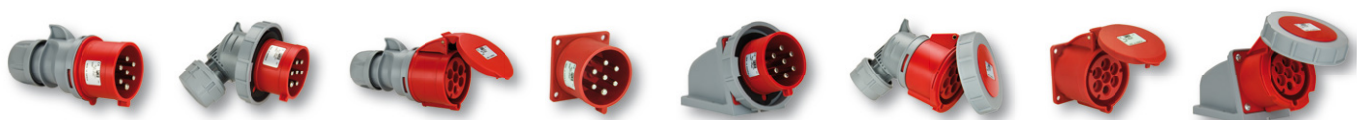
CEE-Motor protection plug  
CEE-Motor protection plug PKZM0  
IP44 or IP67  
(available with and without holder)

## Fields of application:

- Pumps:** Submerged pumps, mobile pumping, pumps for construction sites,...
- Agitators:** Mobile machines for mixing (building site machines)
- Blowers:** Ventilators, space ventilation,...
- Compressors:** Breathing air compressors, mobile compressors,...
- Conveyors:** Rolling and chain conveyors, band-conveyors,...
- Construction machines:** Circular saws, hand tools,...
- Extractions:** ventilation, smoke extraction,...
- Industrial motors**



# CEE plugs and sockets 7-pole 16A and 32A, IP44/54 and IP66/67



## Rubber plugs and connectors



- Austrian/German system
- Belg./French system
- dual-point earthing system (Austrian/German and Belg./French system)

### Plug IP44



Rubber  
(insert: polyamide)

**0511-s**  
**0531-s**  
**0521-s**



Solid rubber  
(insert: rubber)

**0512-s**  
**0532-s**  
**0522-s**

### Angled plug IP44



Rubber  
(insert: polyamide)

**05811-s**  
**05831-s**  
**05821-s**



Solid rubber  
(insert: rubber)

**05812-s**  
**05832-s**  
**05822-s**



- Austrian/German system
- Austrian/German system with child protection (shutter)
- Belg./French system
- Belg./French system with child protection (shutter)

### Connector IP20



Rubber  
(insert: polyamide)

**2510-s**  
**2510-sc**  
**2410-s**  
**2410-sc**



Solid rubber  
(insert: rubber)

**2520-s**



Rubber  
(insert: polyamide)

**2511-s**  
**2511-sc**  
**2411-s**  
**2411-sc**



Solid rubber  
(insert: rubber)

**2521-s**



Rubber  
(insert: polyamide)

**2511-sl**  
**2511-scl**  
**2411-sl\***  
**2411-scl\***

\* with sealing bulge



Solid rubber  
(insert: rubber)

**2522-s**



- dual-point earthing system (Austrian/German and Belg./French system)
- Austrian/German system
- Belg./French system
- Belg./French system with child protection (shutter)

### Plug IP44



Solid rubber  
(insert: rubber)

**05622-s**

### with cap



Rubber  
(insert: polyamide)

**24611-s**  
**24611-sc**

### Connector IP44

Solid rubber  
(insert: rubber)

**25621-s**

### with hinged lid



Solid rubber  
(insert: rubber)

**25622-s**

### 3-way-connector IP44

#### with cap



Rubber  
(insert: polyamide)

**25311-s**  
**25311-sc**  
**24311-s**  
**24311-sc**

Rubber  
(insert: polyamide)

**25311-s5**  
with 5-pole  
connector terminal  
**24311-s5**  
**24311-sc5**

#### with hinged lid



Solid rubber  
(insert: rubber)

**253622-s**

Solid rubber  
(insert: rubber)

**253622-s5**  
with 5-pole  
connector terminal

### 2-way-connector IP44

#### with hinged lid



Polyamide  
(insert: polyamide)

**25212-r**  
**25212-rc**  
**24212-r**  
**24212-rc**

- Austrian/German system
- Austrian/German system with child protection (shutter)
- Belg./French system
- Belg./French system with child protection (shutter)



# Socket outlets

## Watertight plug and connector IP66/68

**NAUTILUS**

also available in bronze-green

- dual-point earthing system (Austrian/German and Belg./French system)
- Austrian/German system
- Belg./French system



**Plug IP66/68**  
with protection cap

**20051-b**



**Connector IP66/68**  
with cap

without child protection

**20251-b**  
**20241-b**

with child protection

**20251-bc**  
**20241-bc**

**NAUTILUS**

## Watertight socket outlet IP66/68

- 16A, 3p (2p+E) with screw terminals
- rear connection
- also available in bronze-green

- Austrian/German system with child protection (shutter)

- Belg./French system with child protection (shutter)



Flange 75x75mm  
4-point fastening  
with hinged lid

**20352-8b**  
**20352-8bc**

**20342-8b**  
**20342-8bc**



Flange 75x75mm  
4-point fastening  
with cover band

**20351-8b**  
**20351-8bc**

**20341-8b**  
**20341-8bc**



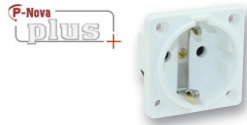
Flange oval  
2-point fastening  
with cover band

**20351-9b**  
**20351-9bc**

**20341-9b**  
**20341-9bc**

## Socket outlet IP20

- 16A, 3p (2p+E) with screw terminals
- side connection
- with child protection (shutter)



Austrian/German system  
DIN 49440

**10584-0wsc**

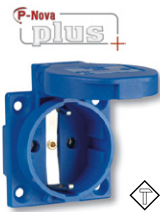
Belg./French system

**10484-0wsc**

## Socket outlet IP54

- 16A, 3p (2p+E)

	• screw terminals	• screwless connection technology	• side connection	• rear connection	• child protection (shutter)	• sealing bulge*
●			●			
●			●		●	
●				●		
●				●	●	
●				●		●
	●			●		
	●			●		
	●			●		●



Austrian/German system  
DIN 49440



**1050-0bs**

**1050-0bsc**

**1050-0b**

**1050-0bc**

**1050-0bw**

**109-0b**

**109-0bc**

**109-0bw**



**1040-0bs**

**1040-0bsc**

**1040-0b**

**1040-0bc**



**104-0bs**

**104-0bsc**

**104-0b**

**104-0bc**

**108-0b**

**108-0bc**

\* Plugs and socket outlets (DIN 49440) for portable use are subject to the standard DIN VDE 0620-1:2010 and ÖVE/ÖNORM EA 8684-2-2:2010

## Flanged socket

- conforming to Italian, Danish, English, Australian and Swiss system
- Flange 50x50mm
- with screw terminals



Italian standard  
**IP54**

**1036-0s**



Danish standard  
**IP44**

**1030-0b**



English standard  
**IP54**

**1020-5s**



Australian standard  
**IP54**

**1037-0s**



Swiss standard  
**IP54**

**1013-0b (T13)**  
**1023-0bs (T23)**

Ampere	Poles	24V~	42V~	24/42V~	24/42V~	24/42V~	24/42V~	24/42V=
		50/60Hz without Minor key	50/60Hz 12h	100-200Hz 4h	300Hz 2h	400Hz 3h	401-500Hz 11h	DC 10h
		Cat.No.	Cat.No.	Cat.No.	Cat.No.	Cat.No.	Cat.No.	Cat.No.

## Extra-low voltage

### Twist Plug

- with screw terminals
- nickel-plated contacts
- with Twist cable gland

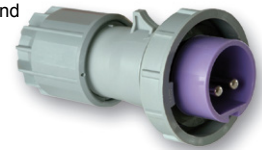
IP44



### Twist Plug

- with screw terminals
- nickel-plated contacts
- with Twist cable gland

IP66/67



### Twist Connector

- with screw terminals
- nickel-plated contacts
- with Twist cable gland

IP44/54



### Twist Connector

- with screw terminals
- nickel-plated contacts
- with Twist cable gland

IP66/67



flange: 70x70; fixing center 56x56

### Flanged socket

- with screw terminals
- straight

IP44/54



flange: 54x60; fixing center 44x44

### Flanged socket

- straight
- with screw terminals
- nickel-plated contacts

IP66/67



### Wall socket

- with screw terminals
- top (M25) and rear entry

IP44



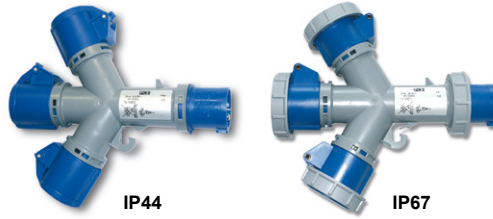
other versions and flange sizes on request!

# Multiple-sockets outlet and adaptors

## Multiple-socket outlet

**Entry:** 1 CEE-plug 16A 3p 230V  
**Outlet:** 3 CEE-sockets 16A 3p 230V

- nickel-plated contacts
- other versions on request

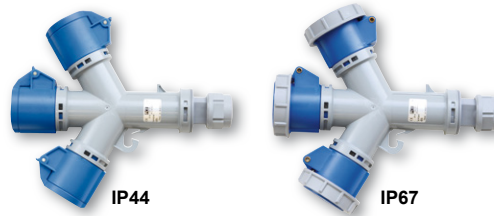


Ampere	Poles	Cat.No.	protection degree
16	3	9432000*	IP44
16	3	9432001*	IP67

## Multiple-socket outlet with cable gland

**Entry:** 1 Twist cable gland  
**Outlet:** 3 CEE-sockets 16A 3p 230V

- nickel-plated contacts
- other versions on request

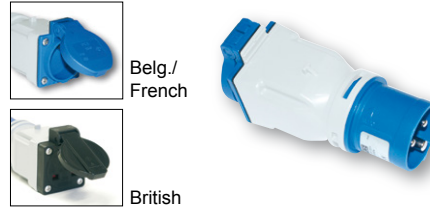


16	3	9432006	IP44
16	3	9432007	IP67

## Adapter - CEE-plug 16A 3p / socket

**Entry:** 1 CEE-plug 16A 3p 230V  
**Outlet:** 1 socket (DIN 49440) 16A 250V

- available also with Belg./French, Danish and British sockets
- nickel-plated contacts



16	3	9433100*	IP44
----	---	----------	------

## Adapter - CEE-plug 16A 5p / socket

**Entry:** 1 CEE-Plug 16A 5p 400V  
**Outlet:** 1 socket (DIN 49440) 16A 250V

- available also with Belg./French, Danish and British sockets
- nickel-plated contacts



16	5	9433020*	IP44
----	---	----------	------

## Adapter - Plug for domestic use / CEE-socket outlet

**Entry:** 1 plug 16A 2p+E 250V (two earthing systems)  
**Outlet:** 1 CEE-socket 16A 3p 230V

- nickel-plated contacts



16	3	9434100*	IP20
----	---	----------	------

## Adapter - Italian plug for domestic use / CEE-socket outlet

**Entry:** 1 italian plug P17  
**Outlet:** 1 CEE-socket 16A 3p 230V

- nickel-plated contacts



16	3	9434200*	IP20
----	---	----------	------

## Multi-Adapter -

### CEE-plug 16A 3p / Italian socket outlet for domestic use

**Entry:** 1 CEE-plug 16A 3p 230V  
**Outlet:** 2 italian socket outlets P17/11  
 1 italian socket outlet P30/17



16	3	9433170*	IP20
----	---	----------	------

\* Export version (in Austria and Germany not allowed!) - other versions on request



**230V~**

50/60Hz  
3p=6h  
4p+5p=9h

**400V~**

50/60Hz  
3p=9h  
4p+5p=6h

Ampere

Poles

Cat.No.

Cat.No.

## Event technology

16 16 16	3 4 5	013-6x	014-6x 015-6x	<b>Shark Plug</b> • with screw terminals • to order screwless connection technology please add "TT" e.g. 013-6TTx IP44		<b>Solid rubber plug</b> • with screwless cable gland • dual-point earthing system • insert: rubber IP44		
32 32 32	3 4 5	023-6x	024-6x 025-6x					05622-ss
63 63 63	3 4 5	033-6xs	034-6xs 035-6xs					<b>Power Twist Plug</b> • Contact frame with screws IP66/67
125 125 125	3 4 5	043-6xs	044-6xs 045-6xs	25622-ss				
16 16 16	3 4 5	613-6x	614-6x 615-6x	<b>Flanged plug straight</b> • with screw terminals • to order screwless connection technology please add "TT" e.g. 613-6TTx IP44		<b>3-way connector - solid rubber</b> • with screwless cable gland • national • with hinged lid • insert: rubber IP44		
32 32 32	3 4 5	623-6x	624-6x 625-6x					253622-sxs
16 16 16	3 4 5	213-6x	214-6x 215-6x					<b>Shark Connector</b> • with screw terminals • to order screwless connection technology please add "TT" e.g. 213-6TTx IP44
32 32 32	3 4 5	223-6x	224-6x 225-6x	94325000				
63 63 63	3 4 5	233-6xs	234-6xs 235-6xs	<b>Power Twist Connector</b> • Contact frame with screws IP66/67		<b>Wall distribution boxes</b> • many designs available on request • solid rubber IP54		
125 125 125	3 4 5	243-6xs	244-6xs 245-6xs					IP54
16 16 16	3 4 5	313-6x	314-6x 315-6x					<b>Flanged socket straight</b> • with screw terminals • to order screwless connection technology please add "TT" e.g. 313-6TTx IP44
32 32 32	3 4 5	323-6x	324-6x 325-6x	IP44				
16 16 16	3 4 5	1050-0ss	1050-0ssw	<b>Socket outlet (DIN 49440)</b> • flange 50x50mm • fixing center 38x38mm • screwed contact • available also with Belg./French and British system IP54		<b>Series M-SVE</b> • shock-resistant, robust and mobile insulated thermo-plastic box • many designs available on request IP44		
16	3	1050-0ssw	with sealing bulge					IP67, IP54

**250V~**

50/60Hz

# Switched interlocked sockets

## Switched interlocked socket - Compact series

- with screw terminals
- housing material: PA6
- nickel-plated contacts
- mechanical interlock



IP44

Ampere	Poles	110V~	230V~	400V~	380V~
		50/60Hz 4h	50/60Hz 3p=6h 4p+5p=9h	50/60Hz 3p=9h 4p+5p=6h	50Hz 4p=3h Container
		Cat.No.	Cat.No.	Cat.No.	Cat.No.
16	3	6013-4	<b>6013-6</b>	6013-9	
16	4	6014-4	6014-9	<b>6014-6</b>	
16	5	6015-4	6015-9	<b>6015-6</b>	
32	3	6023-4	<b>6023-6</b>	6023-9	
32	4	6024-4	6024-9	<b>6024-6</b>	
32	5	6025-4	6025-9	<b>6025-6</b>	

## Switched interlocked socket - Compact series

- with screw terminals
- housing material: PA6
- nickel-plated contacts
- mechanical interlock



IP67

16	3	60132-4	<b>60132-6</b>	60132-9	
16	4	60142-4	60142-9	<b>60142-6</b>	
16	5	60152-4	60152-9	<b>60152-6</b>	
32	3	60232-4	<b>60232-6</b>	60232-9	
32	4	60242-4	60242-9	<b>60242-6</b>	60242-3
32	5	60252-4	60252-9	<b>60252-6</b>	

## Switched interlocked socket - Compact series

- with screw terminals
- housing material: PA6
- nickel-plated contacts
- mechanical interlock
- rear entry



IP44

16	3	6113-4	<b>6113-6</b>	6113-9	
16	4	6114-4	6114-9	<b>6114-6</b>	
16	5	6115-4	6115-9	<b>6115-6</b>	
32	3	6123-4	<b>6123-6</b>	6123-9	
32	4	6124-4	6124-9	<b>6124-6</b>	
32	5	6125-4	6125-9	<b>6125-6</b>	

## Switched interlocked socket - Compact series

- with screw terminals
- housing material: PA6
- nickel-plated contacts
- mechanical interlock
- rear entry



IP67

16	3	61132-4	<b>61132-6</b>	61132-9	
16	4	61142-4	61142-9	<b>61142-6</b>	
16	5	61152-4	61152-9	<b>61152-6</b>	
32	3	61232-4	<b>61232-6</b>	61232-9	
32	4	61242-4	61242-9	<b>61242-6</b>	61242-3
32	5	61252-4	61252-9	<b>61252-6</b>	

## Switched interlocked socket

- with screw terminals
- housing material: PC/ABS
- nickel-plated contacts
- mechanical interlock
- top, bottom or rear entry



IP44

16	3	7513-4	<b>7513-6</b>	7513-9	
16	4	7514-4	7514-9	<b>7514-6</b>	
16	5	7515-4	7515-9	<b>7515-6</b>	
32	3	7523-4	<b>7523-6</b>	7523-9	
32	4	7524-4	7524-9	<b>7524-6</b>	
32	5	7525-4	7525-9	<b>7525-6</b>	

## Switched interlocked socket

- with screw terminals
- housing material: PC/ABS
- nickel-plated contacts
- mechanical interlock
- top, bottom or rear entry



IP66/67

16	3	75132-4	<b>75132-6</b>	75132-9	
16	4	75142-4	75142-9	<b>75142-6</b>	
16	5	75152-4	75152-9	<b>75152-6</b>	
32	3	75232-4	<b>75232-6</b>	75232-9	
32	4	75242-4	75242-9	<b>75242-6</b>	75242-3
32	5	75252-4	75252-9	<b>75252-6</b>	



75242-3

## Switched interlocked socket

- with screw terminals
- housing material: PC/ABS
- brass with lamellar contact CuBe
- mechanical interlock
- top, bottom or rear entry
- housing can be rotated by 180°



IP66/67

63	3	75332-4	<b>75332-6</b>	75332-9	
63	4	75342-4	75342-9	<b>75342-6</b>	
63	5	75352-4	75352-9	<b>75352-6</b>	

## Switched interlocked socket

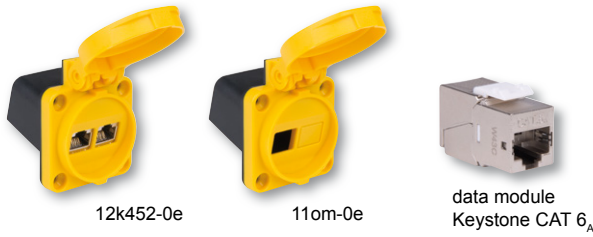
- WxHxT = 520x222x155mm
- with screw terminals
- housing material: PC/ABS
- brass with lamellar contact CuBe
- mechanical interlock
- top entry



IP67

125	3	9755090	<b>9755102</b>	9755091	
125	4	9755095	9755096	<b>9755099</b>	
125	5	9755104	9755105	<b>9755100</b>	

## Data socket with CAT 6<sub>A</sub> RJ45 module



- data socket modular with hinged lid
- housing material: PA6, color: yellow
- incl. rubber seal with 2 cable entries
- **IP54** (lid closed)
- CAT 6<sub>A</sub> Keystone Modul, shielded, RJ45 to LSA stripes, tool free cable installation, color coded according to EIA/TIA 568 A&B

data socket with hinged lid (2x opening) incl. 2xCAT 6<sub>A</sub> RJ45 module  
 data socket with hinged lid (1x opening) empty (without module)  
 data module Keystone CAT 6<sub>A</sub> RJ45

**Cat.No.**  
**12k452-0e**  
**110m-0e**  
**093617**

## CEE - diagnostic plug with LED display

The practical helper for all electricians in industry, craft and on construction sites!

Multiple display- and diagnostic functions:

- Rotary field check
- Phase conductor check
- Neutral conductor check
- Protective earth conductor check



**Version:**  
 16A CEE plug with LED display (16A 5p 6h 400V)  
 32A CEE plug with LED display (32A 5p 6h 400V)

Only for temporary testing period allowed! (not for permanent use)

**Cat.No.**  
**9434152**  
**9434252**

## CEE - current measurement plug

Rotation field check (optional)

### 16A (L1-L2-L3)

- Current measurement: L1 / L2 / L3 with clamp meter\*

### 32A (L1-L2-L3-N-PE)

- Current measurement: L1 / L2 / L3 / N / PE with clamp meter\*

\*Clamp meter not included. Only for temporary testing!



IP44



16A 5p CEE without rotation field check  
 16A 5p CEE with rotation field check

32A 5p CEE without rotation field check  
 32A 5p CEE with rotation field check

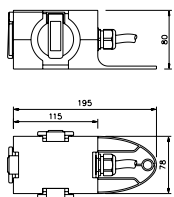
**Cat.No.**  
**9434150**  
**9434151**

**9434250**  
**9434251**

## Compact distribution boxes - Series ST. ANTON

- compact shape made of shock-resistant polyamide
- space saving storage - ergonomic design
- with shackle

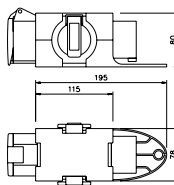
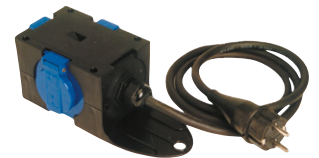
- ready wired for connection
- IP44 splashproof
- well adapted for industry.



**Entry:**  
 M20 cable gland without cable  
 1,5m cable H07RN-F 3G1,5 with rubber plug 16A 250V  
 1,5m cable H07RN-F 5G1,5 with CEE-plug 16A 5p 400V  
 1 CEE-plug 16A 5p 400V

**Cat.No.**  
**9430406**  
**9430409**  
**9430429**  
**9430412**

**Outlet:**  
 (all positions)  
 3 sockets (DIN 49440)  
 16A 250V  
 with self-closing lid



**Entry:**  
 1 CEE-plug 16A 5p 400V  
 1 CEE-phase inverter 16A 5p 400V  
 1,5m cable H07RN-F 5G1,5 with CEE-plug 16A 5p 400V  
 1,5m cable H07RN-F 5G1,5 with CEE-phase inverter 16A 5p 400V

**Cat.No.**  
**9430402**  
**9430452**  
**9430715**  
**9430719**

**Outlet:**  
 (all positions)  
 1 CEE-plug 16A 5p 400V  
 2 sockets (DIN 49440)  
 16A 250V  
 with self-closing lid

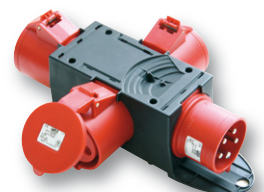


### Series ST. ANTON 4f

**Entry:**  
 1,5m cable H07RN-F 5G4 with CEE-plug 32A 5p 6h 400V  
 1 CEE-plug 32A 5p 6h 400V  
 1,5m cable H07RN-F 5G4 with CEE-phase inverter 400V  
 1 CEE-phase inverter 32A 5p

**Cat.No.**  
**9437113**  
**9437413**  
**9437114**  
**9437454**

**Outlet:**  
 (all positions)  
 3 CEE-sockets 32A 5p 6h 400V



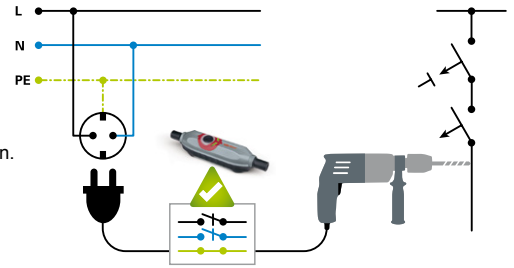


# PRCD-S+ Mobile personal protection devices



PCE's **PRCD-S+** protects the user reliably against incorrect electrical installations.

- Before every switch-on procedure and during operation a fully automatic verification is performed in order to check the correct supply conditions. → The classic "test button" is eliminated.
- Measuring errors are indicated by the signal unit flashing red. In this case, the **PRCD-S+** from PCE gives a visual warning and does not switch on.
- The LED signal unit (red/green) visualizes error situations and offers a permanent status indication.
- The PE conductor circuit is switched on in advance and switched off with a delay.
- Failure situations like external voltage on the PE conductor or fault current above rated values cause an interruption of L and N. The PE conductor stays closed and keeps being monitored!
- The integral surge voltage protection detects 400 VAC and 220 VDC and does not allow these to pass (a weak point occurs).
- Undervoltage will be recognized and the **PRCD-S+** switches off.
- The **PRCD-S+** recognises conductor interruptions or wiring errors from the source system.



Cat.No.

967011355

## Mobile personal protection device **PRCD-S+**

- for direct use inline with connection cords
- Cable inline version **PRCD-S+** 16A 30mA IP55



4670001

## **PRCD-S+** Safety extension cord IP44

- 3m H07RN-F 3G1,5
- with mobile personal protection device **PRCD-S+** 16A 250V~ 30mA
- mounted rubber safety plug and rubber safety connector 16A 250V~



4670002

## **PRCD-S+** Safety extension cord with 3-way connector IP44

- 3m H07RN-F 3G1,5
- with mobile personal protection device **PRCD-S+** 16A 250V~ 30mA
- mounted rubber safety plug and rubber 3-way connector 16A 250V~



9250027

## **PRCD-S+** Safety cable reel XREEL®250

- 25m H07RN-F 3G1,5
- 3x safety sockets (individually replaceable) with sealing bulge and self closing hinged lid 16A 250V, thermo protection switch and rubber safety plug (dual earthing system).
- Including mobile personal protection device **PRCD-S+** 16A 250V~ 30mA, IP44



9350001

## **PRCD-S+** Safety cable reel XREEL®310

- 40m H07RN-F 3G2,5
- 4x safety sockets (individually replaceable) with sealing bulge and self closing hinged lid 16A 250V, thermo protection switch, power indicator light and rubber safety plug (dual earthing system).
- Including mobile personal protection device **PRCD-S+** 16A 250V~ 30mA, IP44



000256

## Carrying case for **PRCD-S+**

Robust, stackable carrying case made of polypropylen for perfect storage and carrying of your **PRCD-S+** safety device or any other equipment.  
outside dimensions: 388 x 388 x 110 mm (WxHxD)  
inside dimensions: 370 x 295 x 100 mm (WxHxD)

## Work lights - mobile

### PCE mini LED



Power/Voltage: 30W / 220-240V~ (50-60Hz)  
 Lighting current/Luminous colour: 3800 lm / 4000 Kelvin  
 Dimensions: (WxHxD): 213 x 410 x 145mm  
 Cable: 5m H07RN-F 3G1,5 with safety plug  
 Housing / colour: 2-component plastic/rubber, red-black  
 IP rating: **IP54** IK08   
 Incl. switch (ON/OFF) and additional safety socket with lid on the side.

Cat.No.  
4303020

**3800**  
Lumen



### PCE mini LED safety



with rechargeable battery for emergency light function, approx. 45 minutes

4303025

### PCE mini light



Power/Voltage: 1 x 24W / 220-240V~  
 Lighting current: 1394 lm  
 Ballast: electron. HF ballast (50-60Hz)  
 Dimensions: (WxHxD): 213 x 410 x 145mm  
 Cable: 5m H07RN-F 3G1,5 with safety plug  
 Housing / colour: 2-component plastic/rubber, red-black  
 IP rating: **IP54** IK08   
 Incl. safety socket with lid on the side. Exchangeable quality bulb TC-L Coolwhite / 840

4302420

**1394**  
Lumen



### PCE standard light



Power/Voltage: 2 x 24W (48W) / 220-240V~  
 Lighting current: 2531 lm  
 Ballast: electron. HF ballast (50-60Hz)  
 Dimensions: (WxHxD): 285 x 440 x 135mm  
 Cable: 5m H07RN-F 3G1,5 with safety plug  
 Housing / colour: plastic, red-black  
 IP rating: **IP54** IK07   
 Incl. safety socket with lid on the side. Exchangeable quality bulb TC-L Coolwhite / 840

4304820

**2531**  
Lumen



### PCE maxi light



Power/Voltage: 3 x 36W (108W) / 220-240V~  
 Lighting current: 5688 lm  
 Ballast: electron. HF ballast (50-60Hz)  
 Dimensions: (WxHxD): 378 x 505 x 165mm  
 Cable: 5m H07RN-F 3G1,5 with safety plug  
 Housing / colour: 2-component plastic/rubber, red-black  
 IP rating: **IP54** IK08   
 Incl. 2 pcs. safety socket with lid (backside) and ON/OFF switch.  
 Exchangeable quality bulb TC-L Coolwhite / 840

4310820

**5688**  
Lumen



### PCE maxi LED



Power/Voltage: 75W / 220-240V~ (50-60Hz)  
 Lighting current/Luminous colour: approx. 7500 lm / 4000 Kelvin  
 Dimensions: (WxHxD): 378 x 505 x 165mm  
 Cable: 5m H07RN-F 3G1,5 with safety plug  
 Housing / colour: 2-component plastic/rubber, red-black  
 IP rating: **IP54** IK08   
 Incl. 2 pcs. safety socket with lid (backside) and ON/OFF switch.

4307520

approx.  
**7500**  
Lumen



## XREEL® Cable Reel

### Cable reel made of special plastics

Stable carrying rack with ergonomic handle made of extremely durable plastic, central brake mechanism as well as 2 parking positions for the plug.



## XREEL® 250



### Equipment:

- 4 x safety sockets with child protection (shutter) 16A 250V
- Thermal protection, power indicator light and safety plug (rubber) with dual earthing system

IP20



Cable length	Cable type	Cable colour	IP	Cat.No.
25m	H05RR-F 3G1,5	■ black	IP20	<b>9250005-p</b>
25m	H05VV-F 3G1,5	■ black	IP20	<b>9250002-p</b>



### Equipment:

- 4 x safety sockets with child protection (shutter), sealing bulge and self closing hinged lid 16A 250V
- Thermal protection, power indicator light and safety plug (rubber) with dual earthing system

IP54



Cable length	Cable type	Cable colour	IP	Cat.No.
25m	H05RR-F 3G1,5	■ black	IP54	<b>9250006-p</b>
25m	H05VV-F 3G1,5	■ black	IP54	<b>9250004-p</b>
25m	H05RR-F 3G1,5	■ black	IP54	<b>9250007-p*</b>



### Equipment:

- 3 x safety sockets (individual exchangeable), sealing bulge and self closing hinged lid 16A 250V
- Thermal protection and safety plug (solid rubber) with dual earthing system

IP54



Cable length	Cable type	Cable colour	IP	Cat.No.
25m	H07RN-F 3G1,5	■ black	IP54	<b>9250012-p</b>
25m	H07BQ-F 3G1,5	■ orange	IP54	<b>9250010-p</b>
25m	H07RN-F 3G1,5	■ black	IP54	<b>9250001-p*</b>



### Empty reel

consisting of carrying rack, drum with stable crank, cable entry and cable gland.

Item	Cat.No.
<b>Empty reel</b> (central panel not included), colour: black	<b>9250998-p</b>
<b>Central panel 4x safety sockets</b> IP54 incl. thermal protection and power indicator light, ready wired on main terminal	<b>925004</b>
<b>Central panel 3x safety sockets</b> IP54 individual exchangeable, incl. thermal protection, ready wired on main terminal	<b>925006</b>

Equipment samples: (other versions on request)



## XREEL® 310

### Equipment:

- 4 x safety sockets (individual exchangeable), sealing bulge and self closing hinged lid 16A 250V
- Thermal protection, power indicator light and safety plug (solid rubber) with dual earthing system



Cable length	Cable type	Cable colour	IP	Cat.No.
25m	H07BQ-F 3G1,5 K2	orange	IP54	9350145-p
30m	H07BQ-F 3G1,5 K2	orange	IP54	9350147-p
40m	H07BQ-F 3G1,5 K2	orange	IP54	9350146-p
50m	H07BQ-F 3G1,5 K2	orange	IP54	9350151-p
25m	H07BQ-F 3G2,5 K2	orange	IP54	9350159-p
30m	H07BQ-F 3G2,5 K2	orange	IP54	9350196-p
40m	H07BQ-F 3G2,5 K2	orange	IP54	9350162-p
50m	H07BQ-F 3G2,5 K2	orange	IP54	9350009-p



25m	H07RN-F 3G1,5 K2	black	IP54	9350150-p
30m	H07RN-F 3G1,5 K2	black	IP54	9350132-p
40m	H07RN-F 3G1,5 K2	black	IP54	9350015-p
50m	H07RN-F 3G1,5 K2	black	IP54	9350160-p
25m	H07RN-F 3G2,5 K2	black	IP54	9350142-p
30m	H07RN-F 3G2,5 K2	black	IP54	9350167-p
40m	H07RN-F 3G2,5 K2	black	IP54	9350202-p
40m	H07RN-F 3G2,5 K2	black	IP54	9350025-p*
50m	H07RN-F 3G2,5 K2	black	IP54	9350163-p



<b>Empty reel</b> with central panel, 4x safety sockets with self closing hinged lid 16A 250V, thermal protection, power indicator light, ready wired on main terminal, black colour	IP54	8935097-p
--	------	-----------

### Equipment:

- 1 x CEE socket 16A 5p 6h 400V
- 3 x safety sockets (individual exchangeable), sealing bulge and self closing hinged lid 16A 250V
- Thermal protection and CEE-plug 16A 5p 400V



Cable length	Cable type	Cable colour	IP	Cat.No.
25m	H07BQ-F 5G2,5 K2	orange	IP54	9350189-p
30m	H07BQ-F 5G2,5 K2	orange	IP54	9350008-p
25m	H07RN-F 5G2,5 K2	black	IP54	9350235-p
33m	H07RN-F 5G2,5 K2	black	IP54	9350042-p



<b>Empty reel</b> with central panel, 1x CEE socket 16A 5p, 3x safety sockets with self closing hinged lid, thermal protection, ready wired on main terminal, black colour	IP54	8935096-p
--	------	-----------

### Equipment:

- 2 x CEE socket 16A 5p
- Thermal protection and CEE-plug 16A 5p 400V



Cable length	Cable type	Cable colour	IP	Cat.No.
30m	H07BQ-F 5G2,5 K2	orange	IP54	9350022-p
25m	H07RN-F 5G2,5 K2	black	IP54	9350245-p



\*French/Belgian system with child protection (shutter)



PCE is a world leader in the development and production of industrial plugs and sockets with an export share of over 80%! Since its founding in 1973 the company continued to develop and to become an international group of companies.

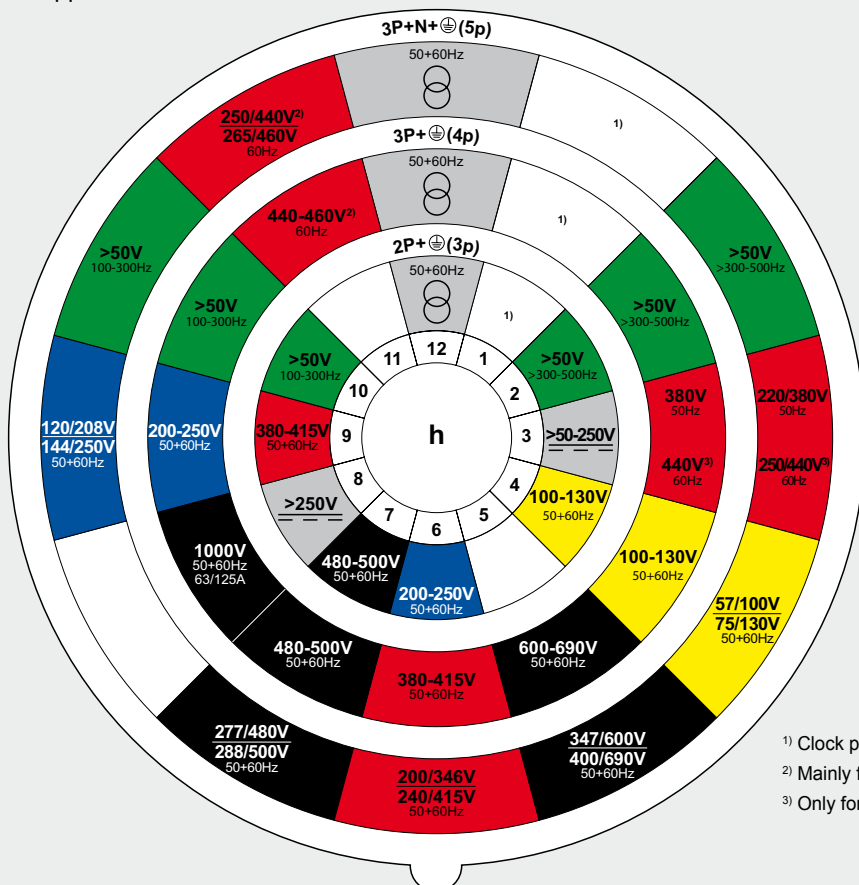
PCE offers a wide range of high quality products for various applications in the electrical installation sector. The range is constantly updated and currently includes approximately 22.000 items. In addition to our standard products PCE is able to produce customer-specific configurations on modern injection molding and metal processing plants within a few days.

High level of quality (ISO 9001:2008 Certification), flexibility and constant innovation of products and processes are among the most important factors of our successful customer-oriented strategy. Speed is top priority! Rapid delivery times and reliability through efficient manufacturing methods and uncomplicated order processing have been appreciated by our customers for years.

Continuous innovation of products and processes paired with the close cooperation with our customers makes PCE a strong, worldwide partner for the professional use of industrial plugs and sockets in electrical installation!

## INTERNATIONAL RATING ACC. TO IEC 60309-2 – SERIE I

for appliances >50V

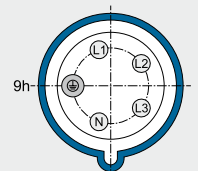
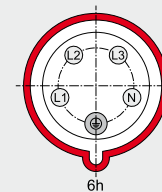


Position of the earthing contact.  
View: frontside socket or connector

Example:

400V 5p = 6h

230V 5p = 9h



<sup>1)</sup> Clock position not standardized and free for use for special applications

<sup>2)</sup> Mainly for ship installations

<sup>3)</sup> Only for refrigerated containers



## PCE Distribution boxes

PCE supplies a variety of high-grade, solid rubber and plastic distributors meeting all specifications and needs in the industrial field as well as those of the construction industry, the crafts, exhibition halls and traffic control equipment.

In addition to a wide range of standard types we also specialize in the manufacturing of customized products.

### FIELDS OF APPLICATION

PCE distributors are to be found in use in all areas where high mechanical loads, extreme operating conditions or comprehensive safety requirements demand a special solution such as in workshops, industrial plants, construction sites, tunnels etc.





# PCE

Connection  
to the future

[www.pcelectric.at](http://www.pcelectric.at)

## PC Electric GesmbH

Diesseits 145

4973 St. Martin im Innkreis

AUSTRIA

TEL +43 7751 61220

FAX +43 7751 6969

office@pcelectric.at

**09845** Vers. 04/2017 EN

For additional technical information please refer to our main catalogue, visit our website [www.pcelectric.at](http://www.pcelectric.at) or contact our salesteam!

